

Optimizing Supply Chain Analysis with KNIME: Geo Data Enrichment and Distance Calculation

Elena Schiefer

BI & DATA SCIENCE

Speaker



Contact

Elena Schiefer

BI & Data Science

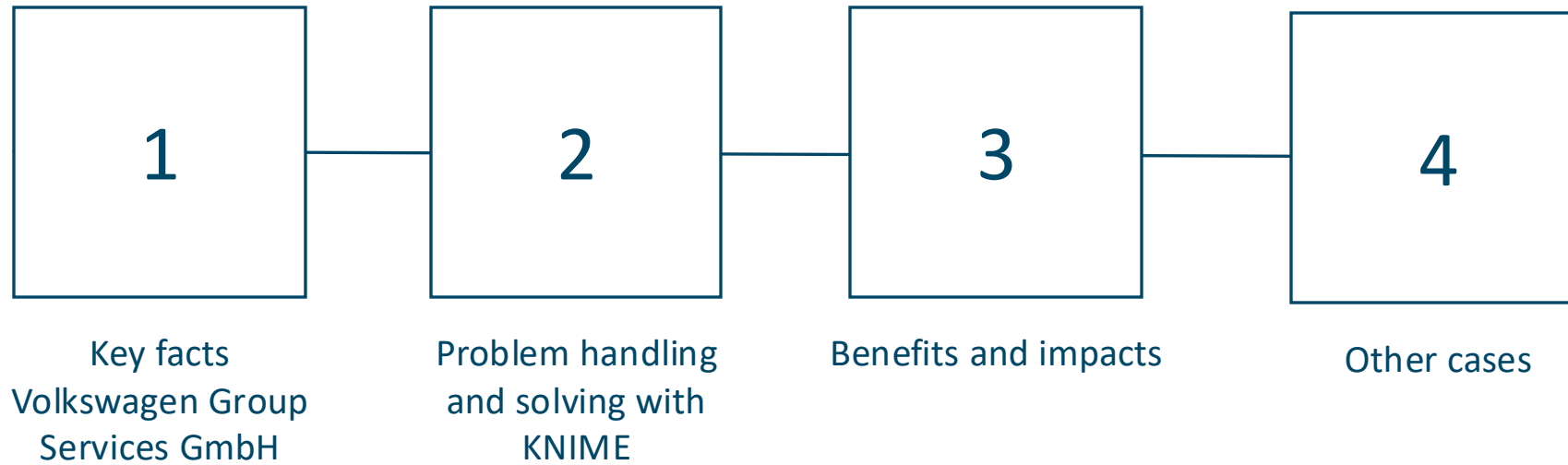
BI Specialist

E-Mail: elena.schiefer@volkswagen-groupservices.com

About me

- Joined VW GS in 2017
- Worked with several BI tools like QlikView, QlikSense, MicroStrategy, Tableau and PowerBI
- KNIME enthusiast and creative messenger
- Horror movie lover 😊

Agenda



Key facts Volkswagen Group Services GmbH



The service provider in the Group – key facts

CEOs



Hartmut Rickel
(Spokesperson)



Dr. Alexandra Baum-Ceisig



Dr. Hagen Repke



GERMANY

9.964
employees¹



EUROPE

3.545
employees²



LEGAL
GmbH

REGISTERED OFFICE IN
Wolfsburg

SITES

12
national

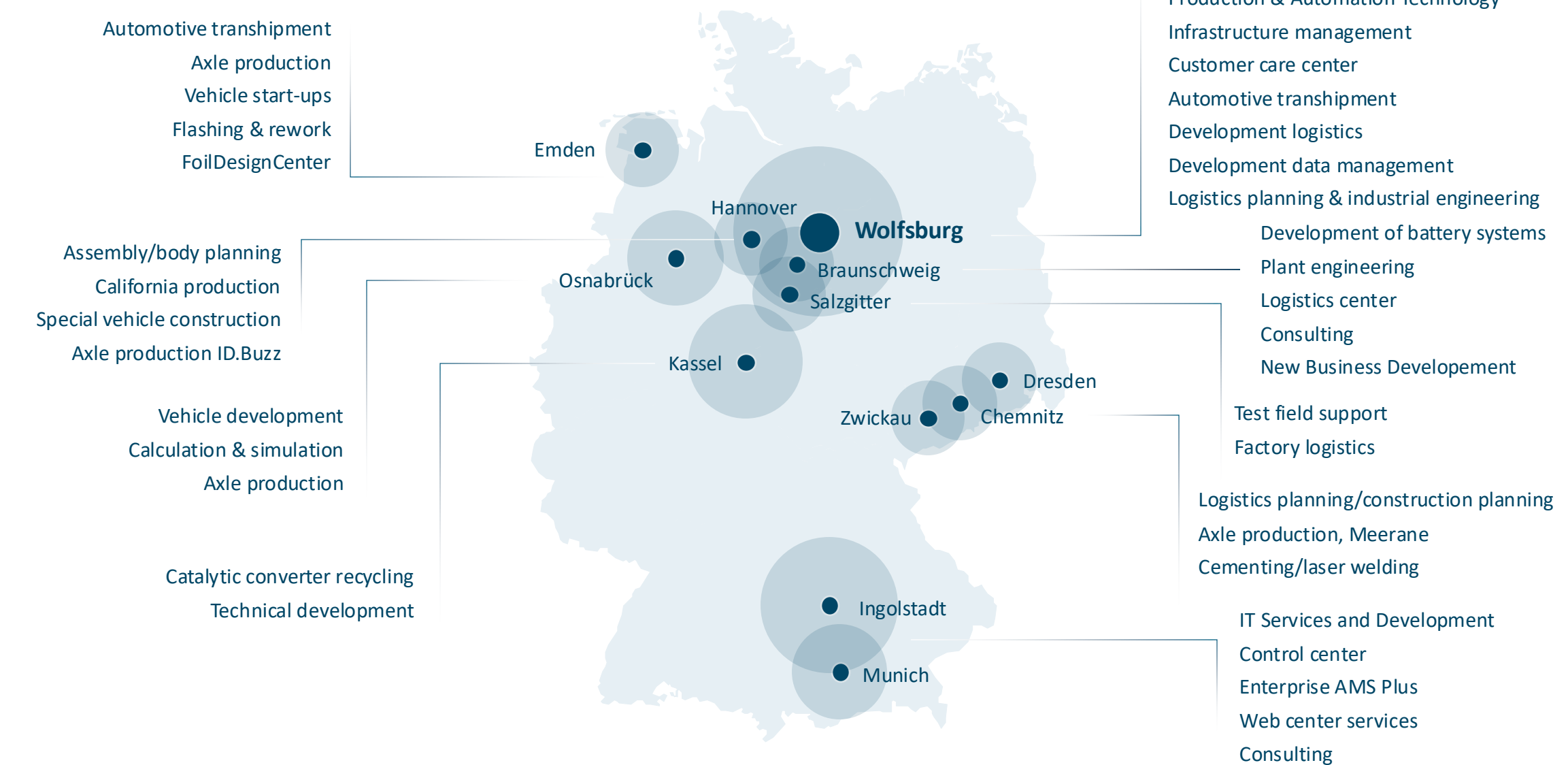
8
international



¹ Version dated Januar 2024, active employees, group loans and trainees included

² Version dated December 2023, active employees, group loans and trainees included

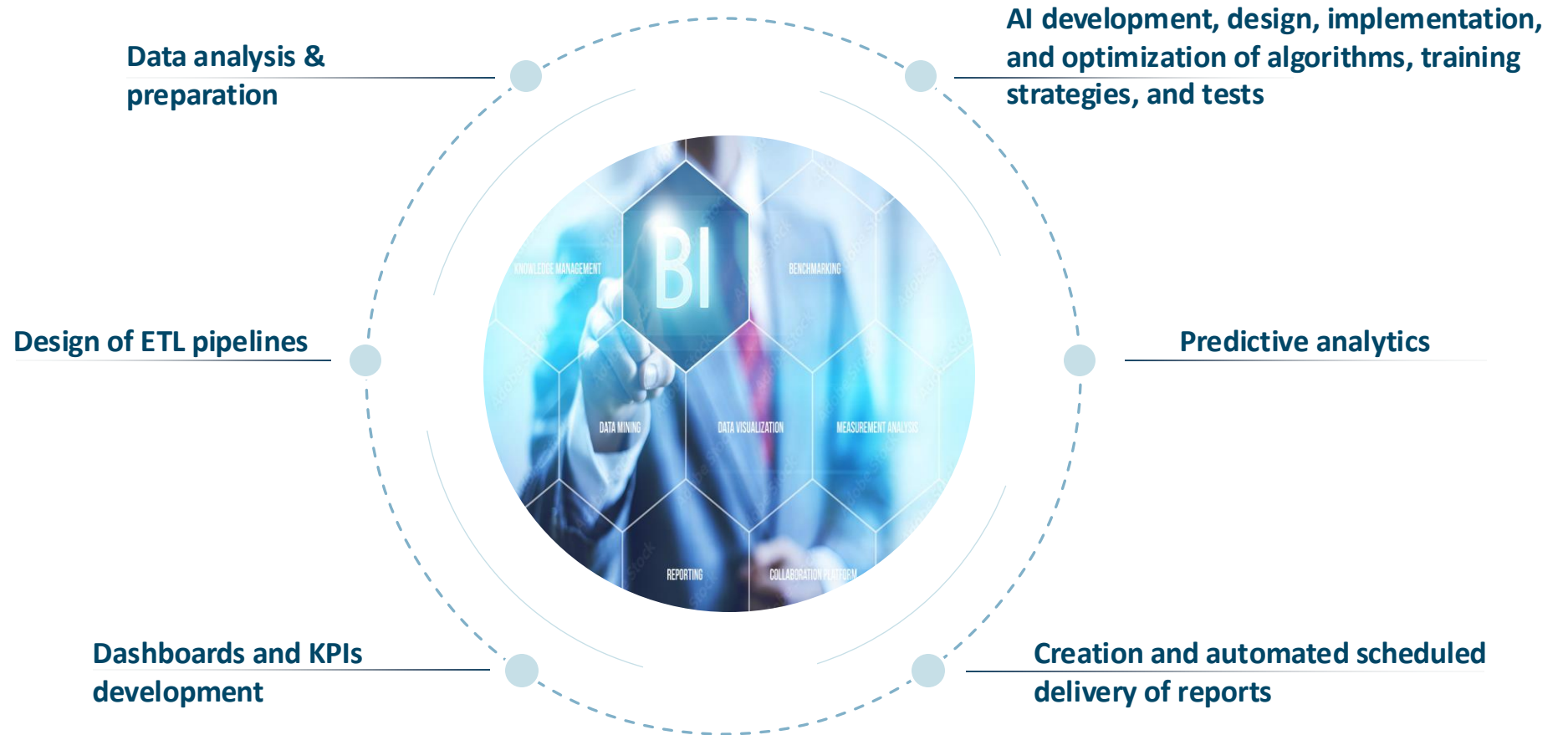
Always close to you – 12 locations in Germany



BI & Data Science

Years of experience in the field of data integration, data quality, analysis & provision of data

We use tools such as Qlik Sense, Power BI, KNIME & Informatica PowerCenter to meet the requirements of our customers effectively and with the highest quality.



Procurement Numbers

59.000

suppliers around the world¹

90+

countries¹

9,31 Mio

vehicles produced in 2023²

Challenges: Key Questions from Management during the Crisis

**The pandemic's
impact on
customers'
suppliers**



How many suppliers do we have in critical regions in Italy?



How big is the impact on production for the Volkswagen Group?



What are the alternatives?

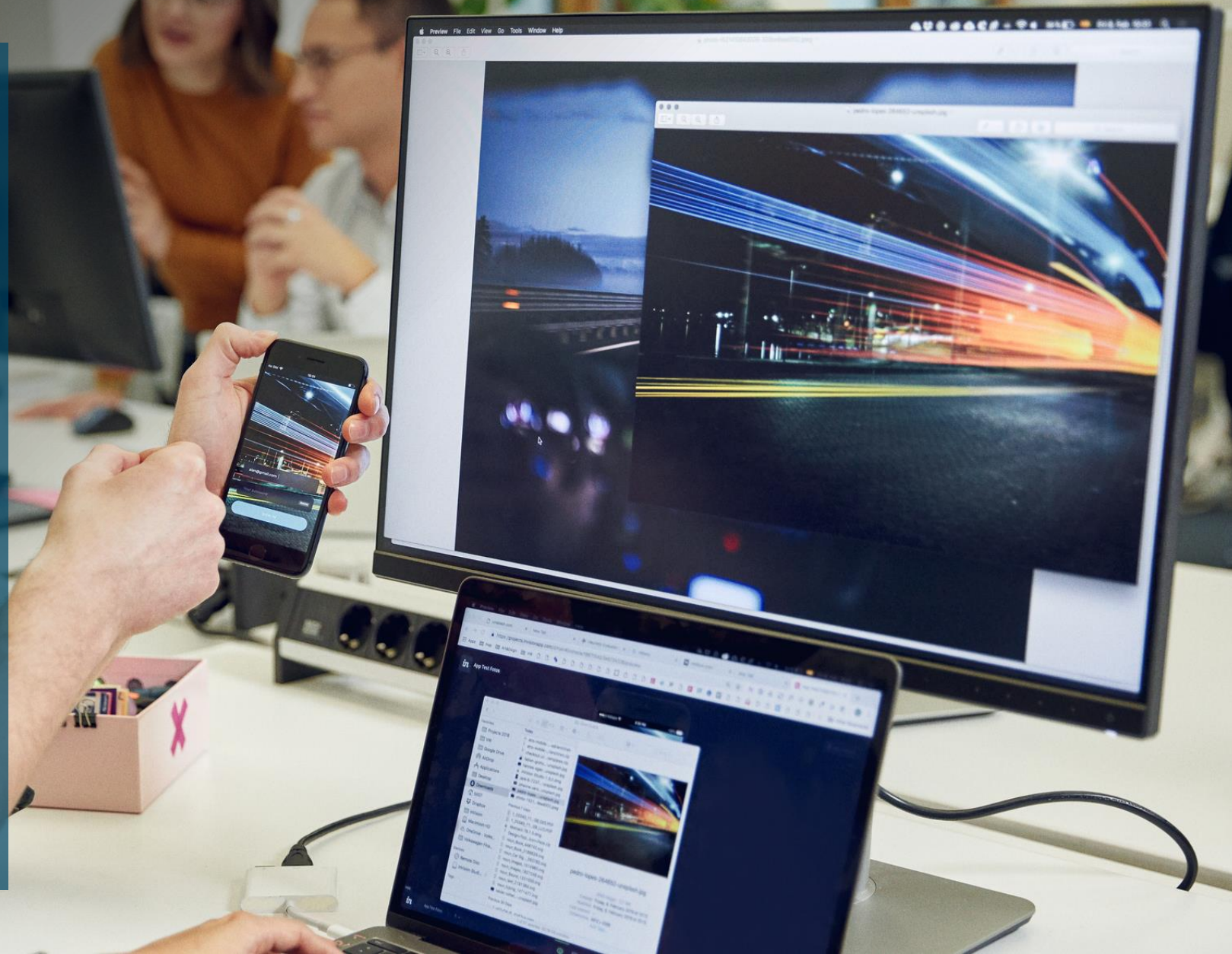
Initial state

Data limitations

Management questions could not be answered with **available data!**



Data for regions, countries and departments was **available for Germany ONLY!**



A nighttime aerial view of a city. In the background, a large industrial facility with several tall smokestacks is illuminated. The middle ground shows a dense urban area with various buildings, some with lit windows. In the foreground, a multi-lane highway with light trails from moving vehicles curves through the scene. The sky is a mix of dark blue and purple, indicating twilight.

Problem handling and solution with KNIME

Problem handling



Searching for solutions

Analyzing alternatives:

- Buy data from external providers
- Let employees fill in the data manually
- Use external resources, e.g. OMS
- Use internal resources

Problem solving with KNIME



Leveraging GeoServer
for Comprehensive Data Enrichment and Analysis



Developed

a workflow accessing an internal GeoServer



Workflow

enriched supplier data by adding attributes like state, coordinates, capital city, etc., through a POST request to the GeoServer



Existing GeoServer

was previously used only for map analyses in BI tools



Enhanced data enabled

answering management's questions and more, such as calculating logistics costs, correcting wrong address data or determining optimal production locations



Benefits and impacts



Benefits and Impact

Cost savings, improved data quality and enhanced efficiency

- **Saved costs** by utilizing an existing resource (GeoServer)
- Eliminated manual data entry for state information for more than **30.000 records**
- Estimated manual work: Approximately **500 hours** (assuming 1 minute per record)
- Increased data quality: German suppliers: **~15% improvement**³
- Other countries: **Significant data quality improvement** by adding regional data for **34 countries**
- Impact on Procurement Department: **6.000 employees** benefited from enhanced data quality, leading to more efficient operations⁴

Think Further, Think Big!

1

Look

around with a neutral
perspective

2

Discover

new potentials

3


Utilize

existing resources and
create greatness (clay
house)

4

Tools

are a complement,
NOT a replacement

A wide-angle, high-angle photograph of a city at night. The sky is a mix of purple, blue, and orange, suggesting dusk or dawn. In the foreground, a multi-lane highway curves through the scene, with long, bright white and yellow light trails from cars moving through the frame. To the left, a large industrial facility with several tall, dark smokestacks is visible, some of which are illuminated. The middle ground is filled with various city buildings, some with glowing windows and others with external lighting. A prominent building in the lower center has a large glass facade and is brightly lit. The overall atmosphere is one of a bustling, modern urban environment.

Other cases

KNIME uses cases

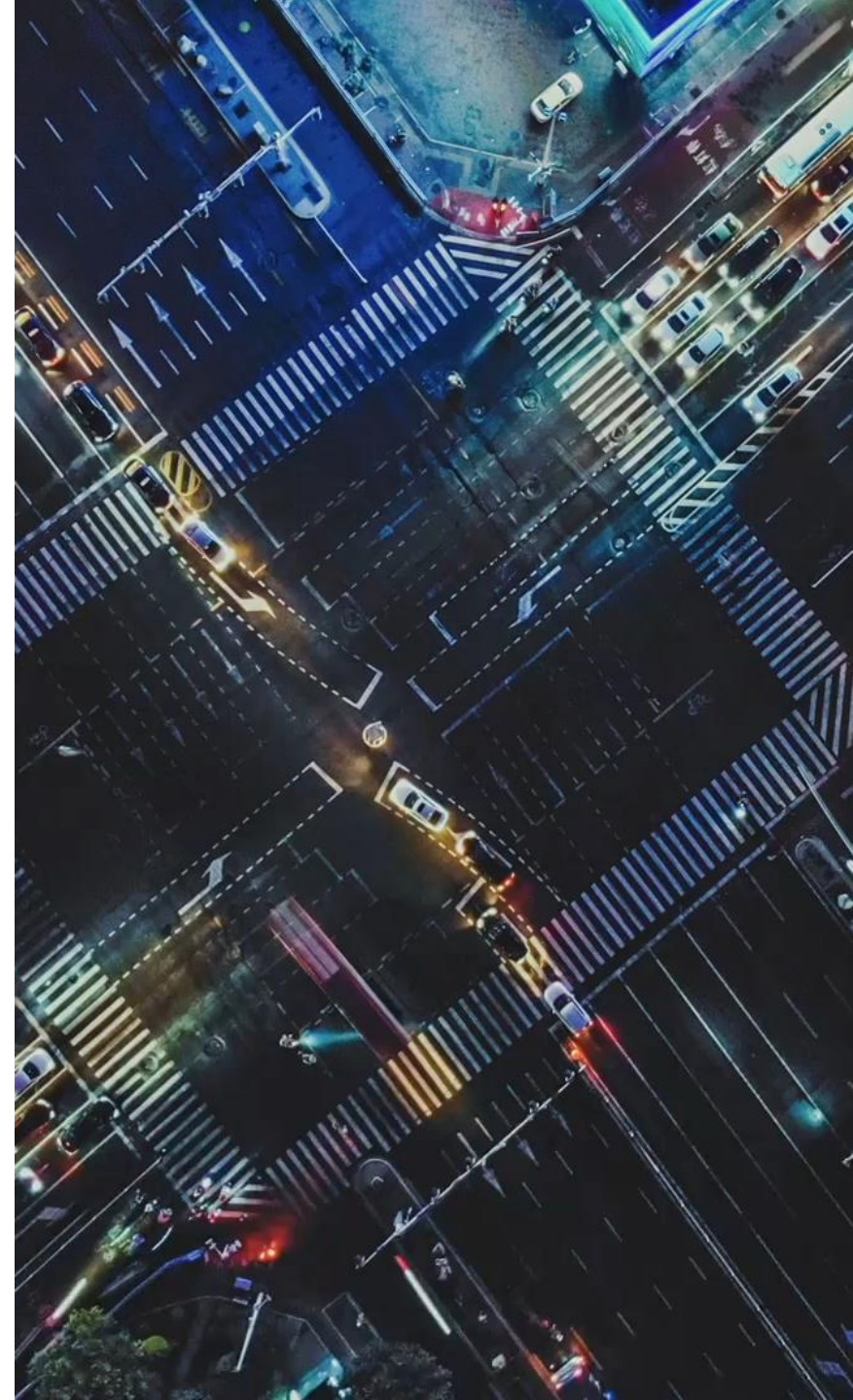
Streamlining internal processes and ensuring data integrity

Internal Department:

- **Developed a workflow** that extracts user IDs from a QlikView meta-file and writes them to an Excel file, replacing manual maintenance

Human Resources:

- **Automated data checks** for Excel files received from other departments
- **Verified correct file names and locations**, preventing QlikView load failures
- **Checked for file changes** since last access, reducing manual checks
- **Performed logical data validations** and wrote correct data to the database, ensuring clean data for QlikView





DANKE
THANK YOU

Contacts



Specialized IT Services & Development

Patrick-Oliver Hünies

Manager
Specialized IT Services & Development

E-mail: patrick-oliver.huenies@volkswagen-groupservices.com



Specialized IT Services & Development

Björn Heitmann

Projectlead
BI, Server & Software Solutions

E-mail: bjoern.heitmann@volkswagen-groupservices.com

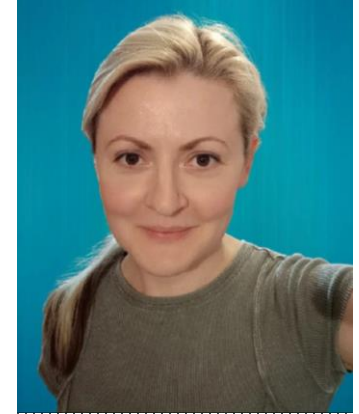


Specialized IT Services & Development

Marcel Niemann

Teamlead
BI & Data Science

E-mail: marcel.niemann@volkswagen-groupservices.com



Specialized IT Services & Development

Elena Schiefer

BI & Data Science
BI Specialist

E-Mail: elena.schiefer@volkswagen-groupservices.com