

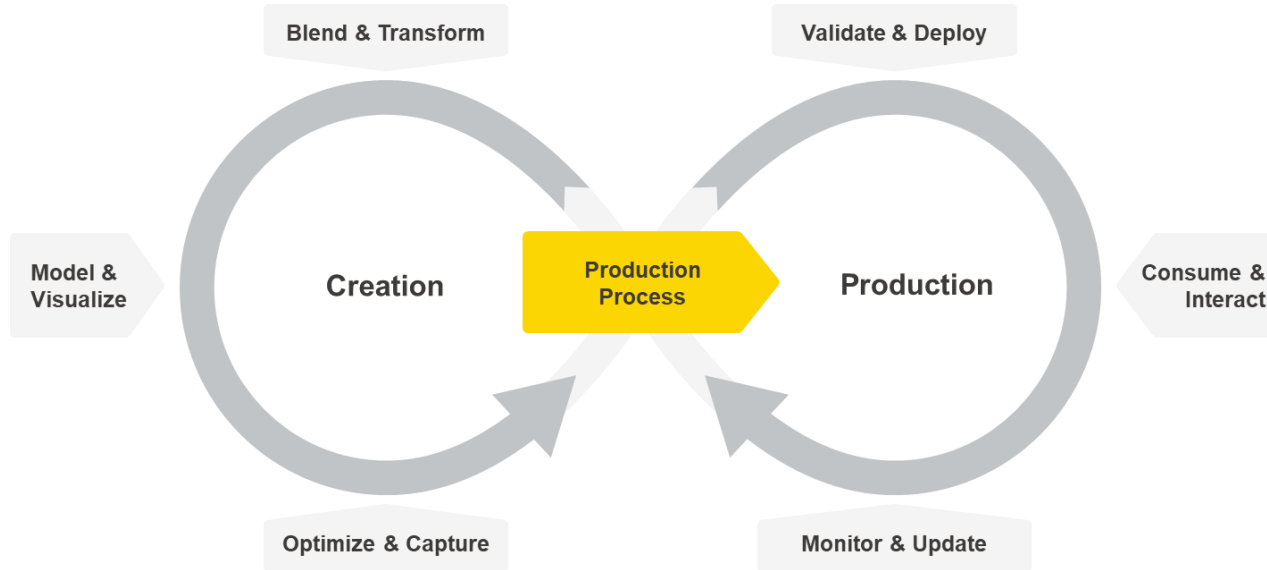


Automating & Productionizing Your First Workflow With KNIME Business Hub

Kevin Sturm & Jörg Wassermann

14.03.2024

Data Science Life Cycle



KNIME Analytics Platform

KNIME Extensions

KNIME Integrations

Community Extensions

Partner Extensions

KNIME Business Hub

Team Collaboration

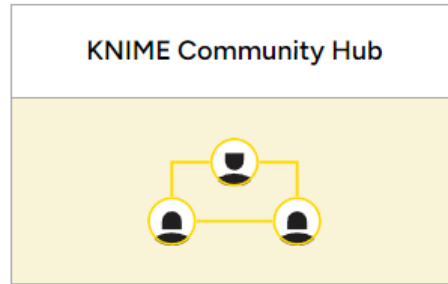
End User Applications

API Services

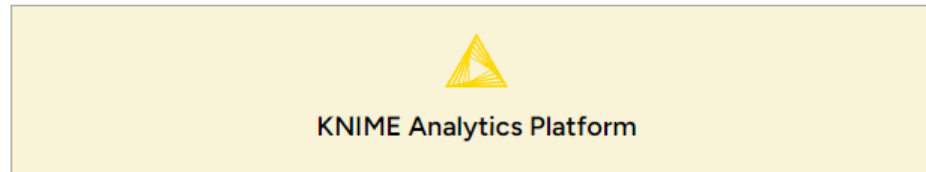
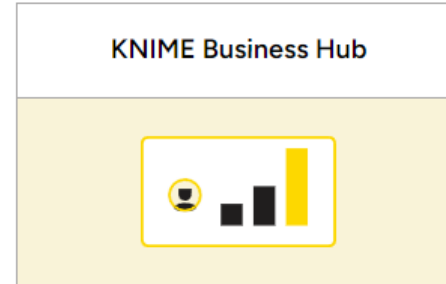
Managed Execution

From ideation to large-scale dissemination of insights

For individuals and small teams

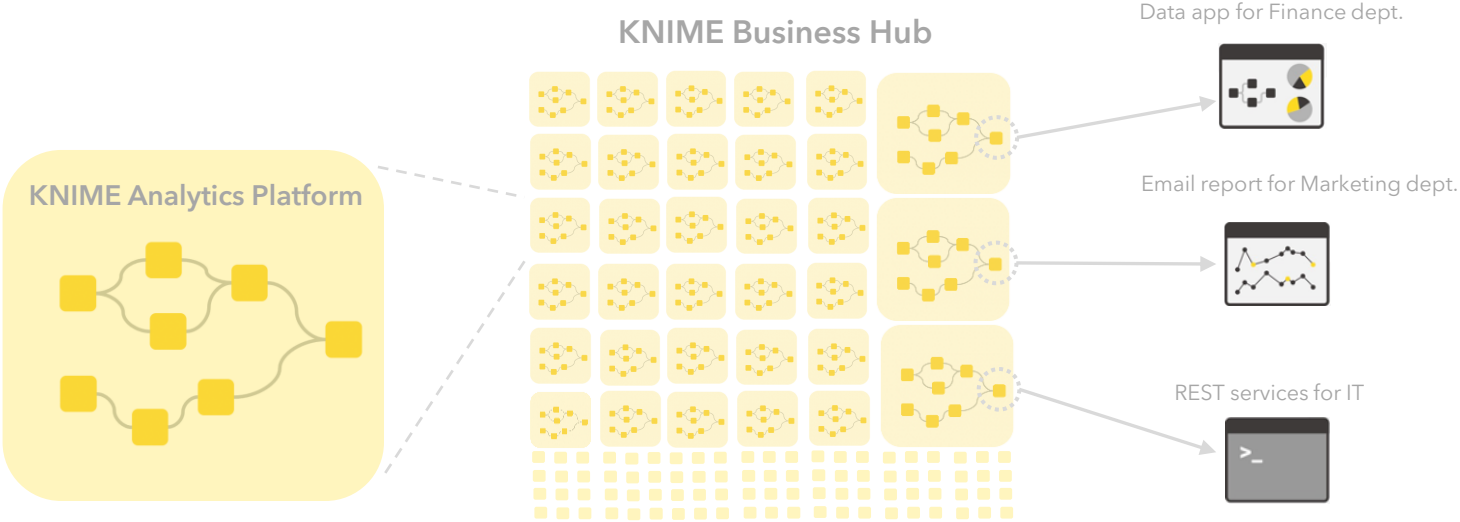


For larger teams with business needs



Build analytic solutions with an intuitive, low-code, no-code interface

Scale data science production in your organization



Demo



Exercise

KNIME Analytics Platform

- 1) Create a mountpoint to Edu-Hub (edu-hub.knime.com)
- 2) Connect your Analytics Platform to the mountpoint
- 3) Upload the workflow into own private space on Edu-Hub

KNIME Business Hub

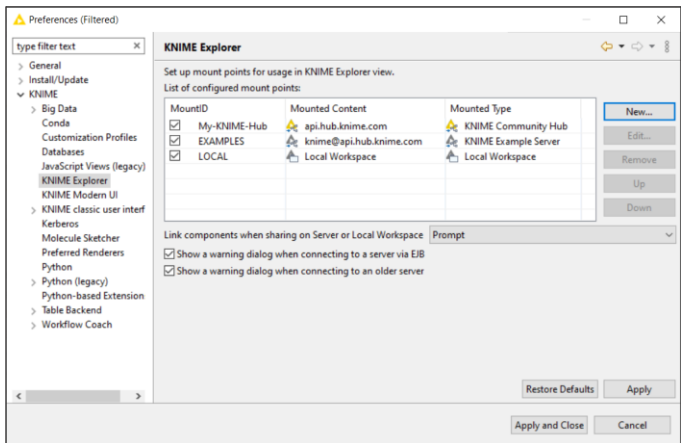
- 4) Login to Edu-Hub and run an ad-hoc execution of your uploaded workflow
- 5) Create an initial version of your uploaded workflow
- 6) Create a Data App deployment and test its execution
- 7) Share the deployment with a participant next to you
- 8) Enter your Data Apps Portal (apps.edu-hub.knime.com) and execute what has been shared with you

Connect to KNIME Business Hub

1

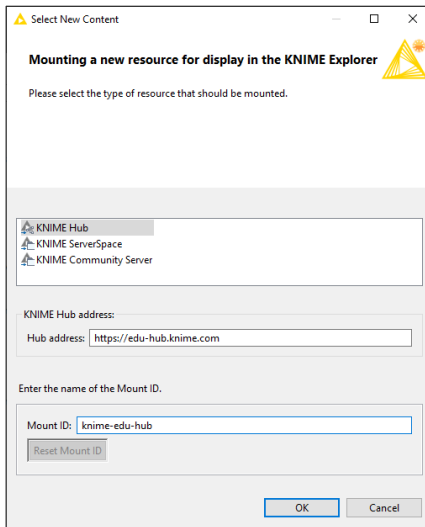
Set up a new mountpoint in KNIME Analytics Platform under

Preferences > KNIME > KNIME Explorer



2

Configure a new Hub mountpoint in KNIME Analytics Platform



3

Connect KNIME Analytics Platform to KNIME Business Hub mountpoint

